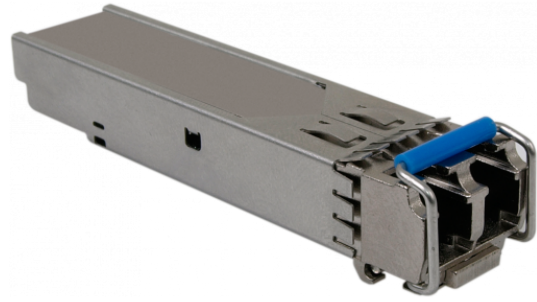




# SFP Module

NV-01SFP



## KEY FEATURES

- 1 x 1000Mb/s LC

SFP Module (Single-Mode), (LC), 20 km.

GENERAL	
Device Type	SFP Module
NETWORK	
Speed transmission	1 Gb/s
Transmit Wavelength	1310 nm
Receiver Sensitivity	-24 dBm
Emission Light Power	-8 dBm ~ -3 dBm
Transmission medium	Single-Mode fiber 9/125 um
Connector type	LC
INSTALLATION PARAMETERS	
Power Consumption	(maximum)
Operating Temperature	0°C ~ 70°C