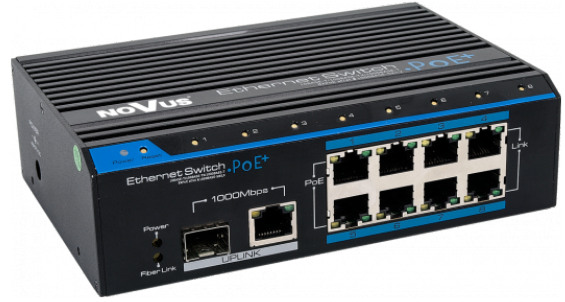




8-PORT POE+ SWITCH

NV-108S/P+



KEY FEATURES

- 8 x 100Mb/s PoE+
- 1 x 1000Mb/s UPLINK, 1 x 1000Mb/s SFP UPLINK

GENERAL	
Device Type	PoE+ Switch
NETWORK	
Ports	PoE+ Ports: 8 x 10Mb/s / 100Mb/s (the number of ports simultaneously operating with PoE + mode is limited by PoE budget), UPLINK ports: 1 x 10Mb/s / 100Mb/s / 1Gb/s, Optical UPLINK ports: 1 x SFP
Transmission Distance	1-8 ports in PoE mode: 150 m * 1-8 ports in PoE+ mode: 20 m * UPLINK port: 100 m *
PoE standards	IEEE802.3af, Class 3, IEEE802.3at, Class 4
Protocols Support	IEEE 802.3 10BASE-T, IEEE 802.3u 100BASE-TX, IEEE 802.3ab 1000BASE-T, IEEE 802.3z 1000BASE-SX/LX
Packet buffer	1 MB
MAC ADDRESS list	8K
FUNCTIONS	
Buttons	8 reset buttons, one for each interface, 1 button to device reset
Surge protection	yes
INSTALLATION PARAMETERS	
Case	Aluminium, color black
Dimensions (mm)	159 (W) x 46.5 (H) x 110 (L)
Weight	570 g
Input Voltage	48 VDC - 57 VDC (power supply 100 ~ 240 VAC/48 VDC included)
Power Consumption	5 W (maximum)
PoE Budget	110 W for ports 1 to 8, up to 30 W for one port
Operating Temperature	-10°C ~ 55°C

* The values was achieved in a test environment. In different environment this value can change due to interferences or influence of other devices.