



# Wall mount cable managed bracket

NVB-6600WB

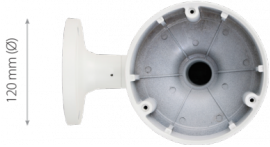


## DIMENSIONS



170 mm

195 mm



120 mm (Ø)

130 mm (Ø)

Type	wall mount cable-managed bracket
Application	selected 6000 IP series models of camera (detailed list of compatible cameras and other products can be found on the website in the file in the "Downloads" tab)
Material	aluminium
Color	white
Load Capacity	2 kg
Dimensions (mm)	130 (W) x 170 (H) x 195 (L)
Weight	0.57 kg