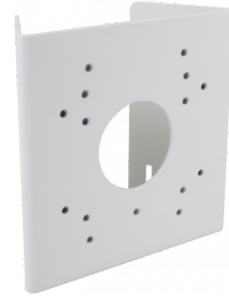




Pole mount adapter

NVB-8000PA



Type	pole mount adapter
Application	selected 8000, 5000 (detailed list of compatible cameras and other products can be found on the website in the file in the "Downloads" tab)
Material	adapter: steel, fixing bands: stainless steel
Color	white
Load Capacity	8 kg
Dimensions (mm)	124 (W) x 120 (H) x 52 (D) \varnothing range = 115 ~ 140
Weight	0.47 kg