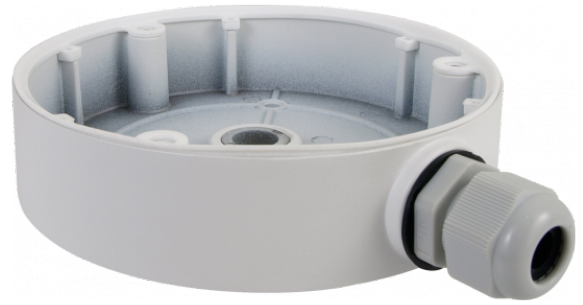




# Ceiling/wall mount cable managed bracket indoor/outdoor

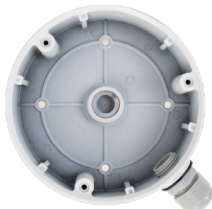
NVB-6045JB



## DIMENSIONS



33 mm



131 mm (Ø)

Type	wall/ceiling mount adapter with cable gland, indoor/outdoor
Application	selected 6000 IP series models of camera (detailed list of compatible cameras and other products can be found on the website in the file in the "Downloads" tab)
Material	aluminium
Color	white
Load Capacity	2 kg
Dimensions (mm)	131 $\varnothing$ x 33 (height)
Weight	0.5 kg