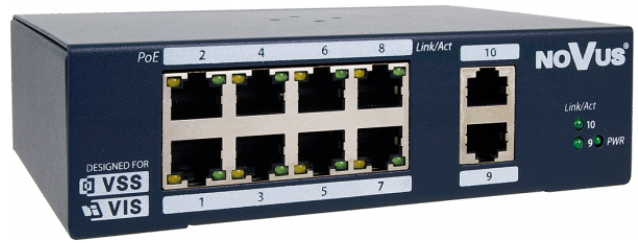




8-port PoE + switch with the possibility of mounting on a DIN rail

NVS-3308SP-DIN



KEY FEATURES

- 8 x 100Mb/s PoE+
- 2 x 1000Mb/s UPLINK
- Operating temperature: 0°C + 40°C

DIMENSIONS

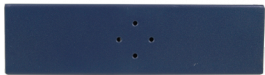


162 mm

45 mm



110 mm



| GENERAL | |
|-------------------------|--|
| Device Type | PoE+ Switch |
| NETWORK | |
| Ports | PoE+ Ports: 8 x 10Mb/s / 100Mb/s (the number of ports simultaneously operating with PoE + mode is limited by PoE budget), Ports RJ-45 UPLINK 1Gb/s: 2 |
| PoE standards | IEEE802.3af, Class 3, IEEE802.3at, Class 4 |
| PoE modes | Endspan (1,2+ / 3,6-) |
| Switching capacity | 5.6 Gb/s |
| Protocols Support | IEEE 802.3 10BASE-T, IEEE 802.3u 100BASE-TX, IEEE 802.3x |
| MAC ADDRESS list | 4K |
| INSTALLATION PARAMETERS | |
| Case | Metal, color navy blue, enclosure with possibility to mount on DIN TH35 rail |
| Dimensions (mm) | 162 (W) x 110 (H) x 45 (L) |
| Weight | 0.7 g |
| Input Voltage | 48 - 56VDC |
| Power Consumption | 120 W (maximum) |
| PoE Budget | 114 W for ports 1 to 8, up to 30 W for one port |
| Operating Temperature | 0°C ~ 40°C |

Note that for the device to work properly, you need to buy a power supply with parameters in accordance with the specification. HDR-100-48