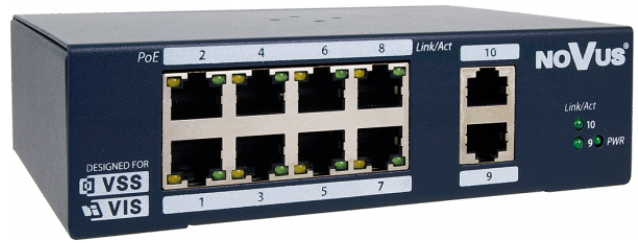




8-port PoE + switch with the possibility of mounting on a DIN rail

NVS-3308SP-DIN



KEY FEATURES

- 8 x 100Mb/s PoE+
- 2 x 1000Mb/s UPLINK
- Operating temperature: 0°C + 40°C

DIMENSIONS

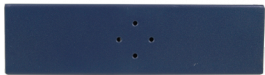


162 mm

45 mm



110 mm



GENERAL	
Device Type	PoE+ Switch
NETWORK	
Ports	PoE+ Ports: 8 x 10Mb/s / 100Mb/s (the number of ports simultaneously operating with PoE + mode is limited by PoE budget), Ports RJ-45 UPLINK 1Gb/s: 2
PoE standards	IEEE802.3af, Class 3, IEEE802.3at, Class 4
PoE modes	Endspan (1,2+ / 3,6-)
Switching capacity	5.6 Gb/s
Protocols Support	IEEE 802.3 10BASE-T, IEEE 802.3u 100BASE-TX, IEEE 802.3x
MAC ADDRESS list	4K
INSTALLATION PARAMETERS	
Case	Metal, color navy blue, enclosure with possibility to mount on DIN TH35 rail
Dimensions (mm)	162 (W) x 110 (H) x 45 (L)
Weight	0.7 g
Input Voltage	48 - 56VDC
Power Consumption	120 W (maximum)
PoE Budget	114 W for ports 1 to 8, up to 30 W for one port
Operating Temperature	0°C ~ 40°C

Note that for the device to work properly, you need to buy a power supply with parameters in accordance with the specification. HDR-100-48