



4 MPX IP Camera with video content analysis based on Deep Learning

NVIP-4VE-6502M/F-II/7043



FUNCTIONS



Kamera dedykowana do współpracy z rejestratorami NOVUS serii 6000. Szczegółowe dane znajdują się w tabeli kompatybilności dostępnej w zakładce **PLIKI DO POBRANIA**.

Image	
Image Sensor	4 MPX CMOS sensor 1/3" SmartSens
Number of Effective Pixels	2688 (H) x 1520 (V)
Min. Illumination	0.003 lx/F1.3 - color mode, 0 lx (IR on) - B/W mode
Electronic Shutter	auto: 1/2 s ~ 1/100000 s
Digital Slow Shutter (DSS)	up to 1/2 s
Wide Dynamic Range (WDR)	yes 120dB
Digital Noise Reduction (DNR)	2D, 3D
Defog Function (F-DNR)	yes
Highlight Compensation (HLC)	yes
Back Light Compensation (BLC)	yes
Reduction of image flicker (Antiflicker)	yes
Lens	
Lens Type	motorized, f=2.8 ~ 12 mm/F1.3
Day/Night	
Switching Type	mechanical IR cut filter
Switching Mode	auto, manual, time
Switching Level Adjustment	yes
Switching Delay	2 ~ 120 s
Switching Schedule	yes
Visible Light Sensor	yes
Network	
Stream Resolution	2560 x 1440 (QHD), 2592 x 1520, 2304 x 1296, 1920 x 1080 (Full HD), 1280 x 720 (HD), 640 x 480 (VGA), 320 x 240 (QVGA), 480 x 240
Frame Rate	30 fps for 2592 x 1520, 60 fps for 1920 x 1080 (Full HD) and lower resolutions
Multistreaming Mode	3 streams
Video/Audio Compression	H.264, H.264+, H.265, H.265+, MJPEG/G.711
Number of Simultaneous Connections	max. 10
Bandwidth	50 Mb/s in total
Network Protocols Support	HTTP, TCP/IP, IPv4, IPv6, UDP, HTTPS, FTP, DHCP, DDNS, NTP, RTSP, RTP, UPnP, SNMP, QoS, IEEE 802.1X, PPPoE, SMTP, RTCP
Camera Configuration	from Internet Explorer, Chrome, Opera, Safari browser languages: Polish, English, Russian, and others
Compatible Software	NOVUS MANAGEMENT SYSTEM VSS, NOVUS MANAGEMENT SYSTEM AC, N Control 6000
Mobile applications	SuperLive Plus (iPhone, Android)
Other functions	
Privacy Zones	4 video mask type: single color or 4 video mask type: mosaic
Motion Detection	yes
Region of interest (ROI)	8
Video Content Analysis (VCA)	tamper, abandoned object, object disappearance, line cross, zone entrance, zone exit, object counting, face detection ¹ , detection of people not wearing masks, pedestrian detection, cross counting, heat map, scene change, video blurred, video color cast, objects distinguishing, people counting, vehicle counting, intrusion detection, video metadata
Image Processing	180° image rotation, sharpening, mirror effect, corridor mode, vertical flip, horizontal flip, lens distortion correction
Prealarm/Postalarm	up to 6 s / up to 120 s
System Reaction to Alarm Events	e-mail, e-mail with attachment, saving file on FTP server, saving file on SD card
Restoring default settings	via web browser, using reset button, via NMS IPTool software
IR LED	
LED Number	3
Range	50 m
Smart IR	yes (software support)
Interfaces	
Audio Input/Output	1 x jack (3.5 mm)/- built-in microphone
Network Interface	1 x Ethernet - RJ-45 interface, 10/100 Mbit/s
Memory Card Slot	microSD - capacity up to 256GB
Installation parameters	
Dimensions (mm)	112 (Ø) x 100 (H)
Weight	0.5 kg
Degree of Protection	IP 67 (details in the user's manual)
Enclosure	vandalproof IK10 impact rating aluminium, grey
Power Supply	12 VDC, PoE (IEEE 802.3af, Class 3)
Surge protection	TVS 4000 V
Power Consumption	5 W, 9.5 W (IR illuminator on)
Operating Temperature	-30°C ~ 60°C

COMPATIBILITY



KEY FEATURES

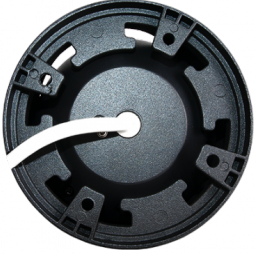
- Resolution: 4 MPX
- Lens: motorized, auto-focus function, f=2.8 ~ 12 mm/F1.3
- built-in microphone
- D/N function - IR cut filter
- Video content analysis based on Deep Learning
- microSD card support
- Min. Illumination: 0.003 lx (0 lx, IR on)
- IR LED, range up to 50 m

DIMENSIONS



100 mm

112 mm (Ø)



Humidity **max. 95%, relative (non-condensing)**

The camera creates a fully functional face recognition system when used with selected NOVUS IP 6000 series recorders (models with "F" in the name). Video metadata - video analysis function available on cameras with software version newer or equal to 5.1.2(42545).