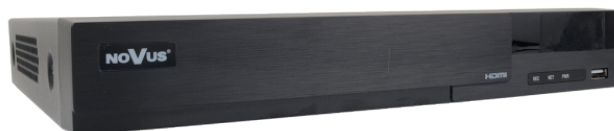




# 16-channel IP Recorder

NVR-6316A-H1-II



## FUNCTIONS



The recorder is dedicated to work with NOVUS 6000 series IP cameras. Detailed data can be found in the compatibility table available in the **DOWNLOADABLE FILES** tab.

Video	
IP Cameras	up to 16 channels at 3840 x 2160 resolution (video + audio)
Maximum Supported Camera Resolution	3840 x 2160
Compression	H.264, H.265, H.265+, H.265 Smart
Monitor Output	main (split screen, full screen, sequence): 1 x HDMI (4K UltraHD), 1 x VGA (up to 2 monitors simultaneously)
Dualstreaming Support	yes
Fisheye Support	yes, 6000 IP series cameras using any web browser, ipGO 6, N Control 6000
Audio	
Audio Input/Output	1 x line-in (RCA) / 1 x HDMI, 1 x line-out (RCA)
Recording	
Recording Speed	480 fps (16 x 30 fps for 3840 x 2160 and lower)
Stream Size	160 Mb/s in total from all cameras
Recording Mode	continuous, triggered by: manual, alarm input, motion detection, intelligent image analysis functions
Prealarm/Postalarm	up to 5 s/up to 600 s
Display	
Display Speed	480 fps (16 x 30 fps)
Playback	
Playback Speed	480 fps (16 x 30 fps)
Recorded Data Search	by date/time, events, image analysis events, POS, motion in a defined area, tags, license plate number
Backup	
Backup Methods	USB port (HDD or Flash memory), network
Backup File Format	MP4, AVI, RPAS (player included)
Storage	
Internal Storage	available mount: 1 x HDD 3.5" 24 TB SATA
Total Internal Capacity	24 TB
Alarm	
Camera Alarm Input/Output	supports IP camera's alarm input/output
Motion Detection	supports camera's motion detection
System Reaction to Alarm Events	buzzer, alarm output activation, recording activation, PTZ, e-mail with attachment, Full Screen, PUSH message, voice prompt, snapshot
Intelligent image analysis	
Supported Functions	Exception, Scene Change, Video Blurred, Video Color Cast, Tripwire, Zone entrance, Abandoned Object, Object Disappearance, Face Detection, Perimeter Intrusion Detection by pedestrian or vehicle, Line Cross Detection by pedestrian or vehicle, License Plate Recognition (LPR), Video metadata
Database Capacity	1000 license plates
Network	
Network Interface	1 x Ethernet - RJ-45 interface, 10/100/1000 Mbit/s
Network Protocols Support	HTTP, TCP/IP, IPv4/v6, HTTPS, FTP, DHCP, DNS, DDNS, NTP, RTSP, UPnP, SNMP, PPPoE, SMTP, P2P, POS, HTML5
PC/MAC Software	NOVUS MANAGEMENT SYSTEM VSS, NOVUS MANAGEMENT SYSTEM AC, NMS, Internet Explorer, Firefox, Chrome, Opera, N Control 6000, Edge/Safari, N Control 6000
Mobile applications	ipGO 6 (iPhone, Android)
Number of Simultaneous Connections	up to 64 clients, up to 20 main streams or 64 substreams or 16 playback streams in total
Bandwidth	160 Mb/s in total to all client workstations
PTZ	
PTZ Functions	pan/tilt/zoom, preset commands
Auxiliary Interfaces	
USB Ports	2 x USB 2.0
Operating system	
Operating System	Linux
OSD	languages: Polish, English, others
Control	PC mouse and IR remote controller (in-set included), network
System Diagnostic	automatic control of: HDDs, network, camera connection loss
Security	password protection, IP filtering, MAC filtering, ARP guard
Installation parameters	
Dimensions (mm)	300 (W) x 52 (H) x 248 (D)
Weight	1.2 kg (without HDD)
Power Supply	12 VDC (100 ~ 240 VAC/12 VDC PSU in-set included)
Power Consumption	20 W (with 1 HDD)
Operating Temperature	-10°C ~ 50°C

The availability of individual functions (including image analysis) depends on the model of the cameras used, as well as the software version of the recorder and cameras.  
Presented display and playback speeds are achieved using dual-streaming. Detailed data on hard drives can be found in the **DOWNLOADABLE FILES** tab.

## DIMENSIONS

