

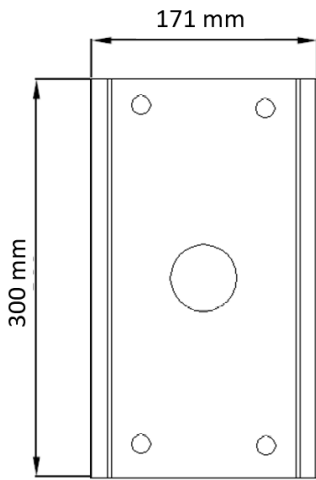


## Pole mount adapter

NVB-SD6500PA



### DIMENSIONS



Type	pole mount adapter
Application	wall mount bracket, indoor/outdoor NVB-SD6500JB
Material	adapter: steel, fixing bands: stainless steel
Color	white
Load Capacity	15 kg
Dimensions (mm)	171 (W) x 300 (H) $\phi$ range = 140 ~ 300
Weight	2.8 kg